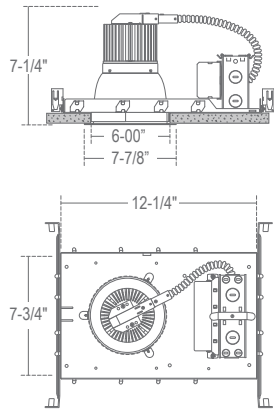
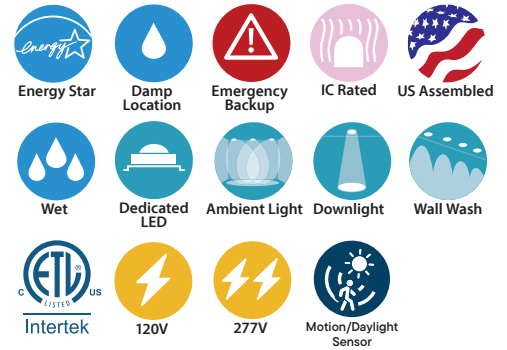


CH6 : 6" C-SERIES

LED DOWNLIGHT NEW CONSTRUCTION 1000LM - 6000LM (8W-55W)



Ceiling Cut-out: 6-3/8"
 Ceiling Thickness: 1" Max



- Twist and lock reflector for quick access to LED lamp array
- Heavy-duty self-flanged reflector
- Soft even lumen distribution
- No visible screws or hardware

ORDERING : CH610ICAUE-D10-EM/CR6L17SW-EMA-T30

[Click for Full Specification Details](#)

CH6xx

Housing	Insulation Contact	Control	Emergency Options	J-Box	Mounting	Reflector	Reflector Finish	Reflector Options	CCT	Options
1000lm (8W)	CH608	[Options]	/CR6L22	Satin Haze Reflector/	SW	None	Blank	2700K (84 CRI) -T27⁹	None	Blank
1900lm (17W)	CH610	[Options]	/CR6L22	White Finish		Integral EM	-EMA³	3000K (84 CRI) -T30	4.5" Ceiling Thickness	-CT4
2300lm (22W)	CH618	[Options]	/CR6L22	White Reflector/	WW	Switch		3500K (84 CRI) -T35		
2800lm (28W)	CH628	[Options]	/CR6L22	White Finish				4000K (84 CRI) -T40		
3100lm (30W)	CH630	[Options]	/CR6L36	All Black	BB			5000K (84 CRI) -T50¹⁰		
3800lm (38W)	CH639	[Options]	/CR6L36	Clear Specular Reflector/White Finish	CW					
4300lm (45W)	CH648	[Options]	/CR6L36	All Satin Haze	SS					
4600lm (45W)	CH649	[Options]	/CR6L40							
4900lm (55W)	CH650⁸	[Options]	/CR6L40							
5400lm (45W)	CH655	[Options]	/CR6L53							
6000lm (50W)	CH660	[Options]	/CR6L60							

Options										
Insulation Contact	Control ²			Emergency Options		J-Box		Mounting		
Non-IC Blank	0-10V Dimming			None		None		24" Adjustable Blank		
IC Rated/ Airtight ICA⁵	UniDim™ 0-10V, TRIAC/ELV Dimming			10W Emergency Battery		Junction Box (Chicago Plenum)		Architectural -BWNG⁴ C-Channel		
	TRIAC/ELVDimming (120V)			Full Power Emergency Inverter						
	Lutron Hi-Lume			Emergency Inverter						
	Lutron EcoSystem			Full Power Emergency Inverter (347V)						
	0-10V Dimming (347V)			GTD Device						
	1%, 0-10V Dimming									
	DMX Dimming with input via XLR5 (120V/277V)									
	DMX Dimming with input via RJ45 (120V/277V)									
	Athena Wireless Node (120V)									
	Athena Wireless Node									
	Occupancy Sensor (120V)									
	UniSense - Remotely Mounted Motion/Photosensor (120V)									
	UniSense - Remotely Mounted Motion/Photosensor									
	Casambi Wireless Dimming									
	BubblyNet Wireless System									
	Lutron Vive Wireless Dimming Module									

¹ Housing must match corresponding Reflector in column to right.
² All drivers are 120V/277V unless otherwise noted.
³ Only available for EM Housings.
⁴ (-BWNG) option does **NOT** include Hanger Bars. Hanger Bars ordered separately.
⁵ (ICA) is only available for CH608, CH610 and CH618.
⁶ (-347-D10) not available for CH608.
⁷ (-EMAC) Check Wiring Diagrams.
⁸ CH650/CR6L40 only available with UE-D10, UE-D10P1 and -347-D10 dimming options.
⁹ (-T27) not available for CH660/CR6L60.
¹⁰ (-T50) not available for CH655/CR6L53 and CH660/CR6L60.
¹¹ Special Order.
¹² (-SUN-RMT) Sensor sent with mounting clips for existing ceiling applications.

COMPATABILITY

VR800 Outdoor Vandal Resistant Ceiling/Wall Kit		P-CR672SW Wall Wash for 6"		CR6-GSKT 6" Commercial Self-Adhesive Gasket	
---	--	--------------------------------------	--	---	--

2025.11.05