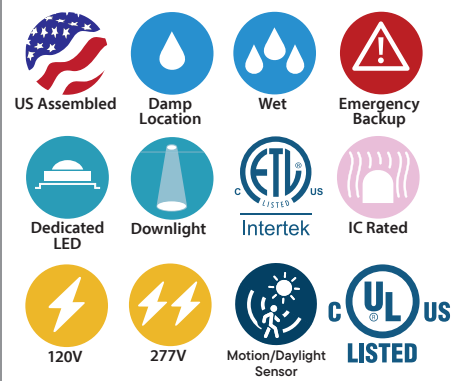
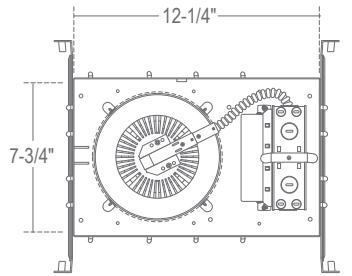
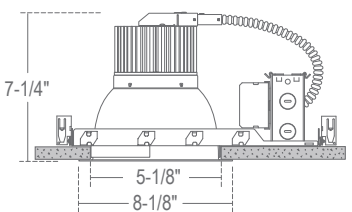


CR612 - 6" C-SERIES

DEAD FRONT WET LOCATION LED DOWNLIGHT, 1000LM - 6000LM (8W-55W)



- Suitable for dry, damp, or wet locations
- Albalite lens with non-conductive, dead-front flange ring produces strong, vibrant light
- No visible screws or hardware



Ceiling Cut-out: 6-3/8"
 Ceiling Thickness: 1" Max

ORDERING : CR612L22W-T27/CH610ICAUE-D10-CHP-BWNG

[Click for Full Specification Details](#)

CR612L22		/									
Reflector	Reflector Finish	CCT	Options	Housing	Insulation Contact	Control	Emergency Option	J-Box	Mounting		
CR612L22 [Options]		1000lm (16W)	/CH608		Non-IC Blank	0-10V Dimming	UE-D10		None		Blank
CR612L22 [Options]		1900lm (17W)	/CH610		ICA Rated ICA ²	UniDim™ 0-10V, TRIAC/ELV Dimming (120V/277V)	UE-DUN		10W Emergency Battery		-EM
CR612L22 [Options]		2300lm (22W)	/CH618			TRIAC/ELV Dimming (120V)	-DIN		Full Power Emergency Inverter		-EMAC ⁶
CR612L22 [Options]		2800lm (28W)	/CH628		Options	Lutron Hi-Lume	UE-DHL		Full Power Emergency Inverter (347V)		-EMAC347 ⁶
CR612L36 [Options]		3100lm (30W)	/CH630		None Blank	Lutron EcoSystem	UE-ECO		GTD Device		-GTD
CR612L36 [Options]		3800lm (38W)	/CH639		4.5" Ceiling Thickness	0-10V Dimming (347V)	-347-D10 ⁴				
CR612L36 [Options]		4300lm (45W)	/CH648		Dead Front	1%, 0-10V Dimming	UE-D10P1				
CR612L40 [Options]		4600lm (45W)	/CH649			DMX Dimming with input via XLR5 (120V/277V)	UE-DMXLR5				
CR612L40 [Options]		4900lm (55W)	/CH650 ⁷			DMX Dimming with input via RJ45 (120V/277V)	UE-DMXRJ45				
CR612L53 [Options]		5400lm (45W)	/CH655			Athena Wireless Node (120V)	-AWN				
CR612L60 [Options]		6000lm (50W)	/CH650			UniSense - Remotely Mounted Motion/Photosensor (120V)	-SUN-RMT ⁵				
						UniSense - Remotely Mounted Motion/Photosensor (120V/277V)	-SUN-RMT-1227 ⁵				
						Casambi Wireless Dimming (120V/277V)	-DCSM ³				
						BubblyNet Wireless System (120V/277V)	-DBNT ³				
						Lutron Vive Wireless Dimming Module (120V/277V)	-VIVE ³				

Options		J-Box		Mounting	
Flange Finish	Color Temperature	None	Blank	24" Adjustable	Blank
White W	2700K (84 CRI) -T27 ⁸	Junction Box (Chicago Plenum)	-CHP	Architectural C-Channel	-BWNG
All Black B	3000K (84 CRI) -T30				
	3500K (84 CRI) -T35				
	4000K (84 CRI) -T40				
	5000K (84 CRI) -T50 ⁹				

2025.12.09

¹ Reflector must match corresponding Housing in column immediately to right.
² ICA is only available for CH608, CH610, and CH618.
³ Special Order.
⁴ (-347-D10) not available on CH608.
⁵ (-SUN-RMT) sensor sent with mounting clips for existing ceiling applications.
⁶ Check Wiring Diagrams.
⁷ CH650/CR612L40 only available with UE-D10, UE-D10P1, and -347-D10 dimming options.
⁸ (-T27) not available for CH660/CR612L60.
⁹ (-T50) not available for CH655/CR612L53 and CH660/CR612L60.