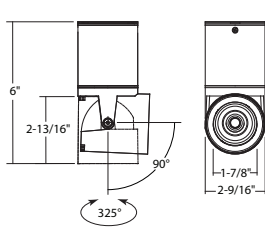
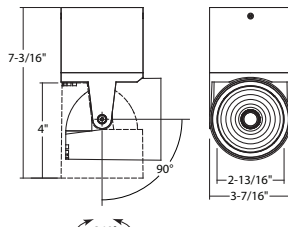


LCALDJ : CYLOPRO ADJUSTABLE ACCENT

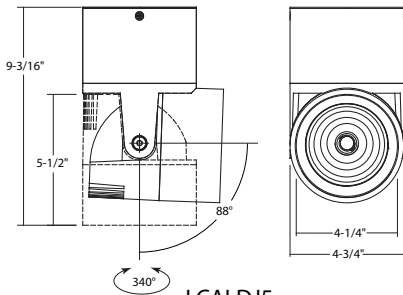
SURFACE/WALL/PENDANT/TRACK 700LM - 4500LM (10W - 45W)



LCALDJ2



LCALDJ3



LCALDJ5

ORDERING : LCALDJ2W-L07-B25UE-DUN-T27-STM24-FR

[Click for Full Specification Details](#)

Fixture	Finish	Lumens	Beam Spread	Control	Color Temperature	Mounting	Accessories
Fixture	Finish	Lumens		Color Temperature		Beam Spread	
2.5" (700lm or 1000lm)	LCALDJ2	White	W	LCALDJ2 - 700lm (10W)	-L07	40° Flood	Blank
3.5" (1500lm or 2000lm)	LCALDJ3	Black	B	LCALDJ2 - 1000lm (15W)	-L09	15° Narrow Spot	-B15
5" (2000lm - 4500lm)	LCALDJ5			LCALDJ3 - 1500lm (20W)	-L15	25° Narrow Flood	-B25
				LCALDJ3 - 2000lm (30W)	-L20	60° Wide Flood	-B60²
				LCALDJ5 - 2000lm (20W)	-L21		
				LCALDJ5 - 2500lm (30W)	-L25		
				LCALDJ5 - 3500lm (40W)	-L35		
				LCALDJ5 - 4500lm (45W)	-L45		
Control	Color Temperature	Mounting		Accessories			
Non-Dimming (120V)	Blank	3000K (90 CRI)	Blank	Surface Mount	-40	None	Blank
TRIAC/ELV Dimming (120V)	-DIN⁸	3000K (97 CRI)	-T30-C97	(4" Octagonal Jbox)		Frosted Lens	-FR
0-10V Dimming (120V/277V)	UE-D10	2700K (90 CRI)	-T27	12" Stem Pendant	-STM12	Louver	-LVR²
UniDim™ 0-10V, TRIAC/ELV Dimming (120V/277V)	UE-DUN	2700K (97 CRI)	-T27-C97	24" Stem Pendant	-STM24	Integral Emergency Back Pack	-EMA¹
Dali Dimming (120V/277V)	UE-DL1^{3,4,8}	3500K (90 CRI)	-T35	36" Stem Pendant	-STM36		
Athena Wireless Node (120V)	-AWN⁵	4000K (90 CRI)	-T40	48" Stem Pendant	-STM48		
Casambi Wireless Dimming (120V/277V)	-DCSM⁵	1850K-3000K	-TWD^{2,6}	12" Stem Pendant (Sloped Ceiling)	-STM12J		
BubblyNet Wireless System (120V/277V)	-DBNT⁵	Warm Dimming		24" Stem Pendant (Sloped Ceiling)	-STM24J		
				36" Stem Pendant (Sloped Ceiling)	-STM36J		
				48" Stem Pendant (Sloped Ceiling)	-STM48J		
				72" 5-Wire Cord Mount	-CRD72		
				1CCT/1NT Connector	-1C1N^{2,7}		
				2CCT/2NT Connector	-2C2N^{2,7}		
				3CCT/1NT Connector	-3C1N^{2,7}		

¹ Only available for LCALDJ2.
² Only available for LCALDJ2 and LCALDJ3.
³ Only available for LCALDJ3 and LCALDJ5.
⁴ (LCALDJ5) Special Order.

⁵ Special Order. Must be ordered with LCMPD7-EMA-BLANK.
⁶ (-L15, -L25, and -L35) not available with Warm Dimming.
⁷ (UE-DL1, -AWN, and -DBNT) option not available for track mounting.
⁸ (LCALDJ3) Special Order. Extended lead time may apply. Consult Factory.