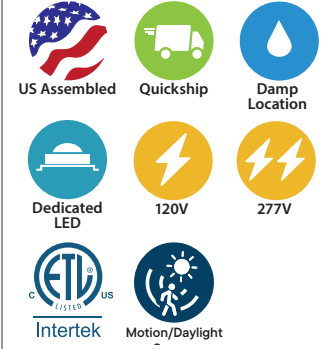
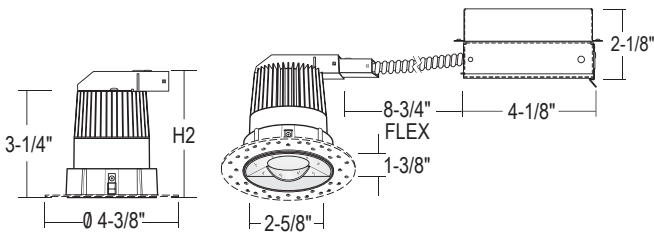


## LRXLD2573: 2.5" P-SERIES

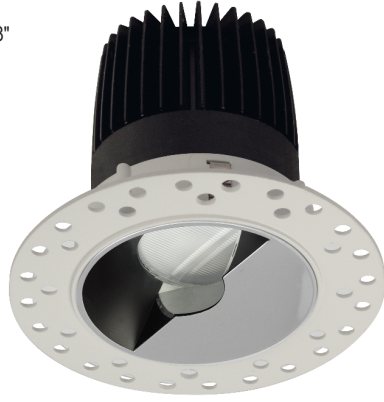
RECESSED LED - ZERODARK WALL WASH, ROUND FLANGELESS, 750LM/1200LM



- Equivalent to 75W MR16 Output
- Ideal where space is limited and energy savings is important
- 750lm (15W) and 1200lm (22W)
- 90 CRI Standard
- 0.5% dimming for 750lm (-L09), 5% dimming for 1200lm (-L14).



**-L09:** H2: 3-7/8"     **-L14:** H2: 5-1/8"     Ceiling Cut-Out: 3-1/16" Max  
 Ceiling Thickness: 3-00" Max



[Click for Full Specification Details](#)

Fixture	Reflector Finish	Lumens	Color Temperature	Control	Rating	Options	Optional Frames
<b>Fixture</b>			<b>Color Temperature</b>				
ZeroDark Wall Wash Round Flanged	<b>LRXLD2573</b>	3000K (90 CRI)	<b>Blank</b>	Triac Dimming (120V)	<b>Blank</b>		
		3000K (97 CRI)	<b>-C97</b>	0-10V Dimming (120V/277V)	<b>UE-D10</b>		<b>Blank</b>
		2700K (90 CRI)	<b>-T27</b>	UniDim™ 0-10V, ELV, Triac Dimming (120V/277V)	<b>UE-DUN</b>		4" Jbox (Chicago Plenum)
		2700K (97 CRI)	<b>-T27-C97</b>	0-10V 1% Dimming (120V/277V)	<b>UE-D10P1</b>		
		3500K (90 CRI)	<b>-T35</b>	Lutron EcoSystem Dimming (1%)	<b>-DEC<sup>9</sup></b>		<b>Options</b>
		4000K (90 CRI)	<b>-T40</b>	DALI Dimming	<b>-DLI<sup>9</sup></b>		Trimless Wood
		3000K - 1800K Warm Dimming	<b>-TWD<sup>2,5</sup></b>	Athena Wireless Node (120V)	<b>-AWN</b>		<b>-WD<sup>8</sup></b>
				Athena Wireless Node Occupancy Sensor (120V)	<b>-AWN-OCC</b>		
				UniSense - Remotely Mounted Motion/Photosensor (120V)	<b>-SUN-RMT<sup>3</sup></b>		
				UniSense - Remotely Mounted Motion/Photosensor	<b>-SUN-RMT-1227<sup>3</sup></b>		
				Casambi Wireless Dimming	<b>-DCSM<sup>9</sup></b>		
				BubbyNet Wireless System	<b>-DBNT<sup>9</sup></b>		
<b>Lumens (Nominal Delivered)</b>							
750lm (15W)	<b>-L09<sup>2</sup></b>						
1200lm (22W)	<b>-L14<sup>5</sup></b>						

2025.07.28

<sup>2</sup> (-TWD) Warm Dimming only available for 1000lm (-L09) lumen package.  
<sup>3</sup> (-SUN-RMT) sensor sent with mounting clips for existing ceiling applications.  
<sup>5</sup> (-TWD) Warm Dimming, and (-L14) 1400lm is not available for both LHLD25IC-FRM (IC) or LHFRLD25 (Fire-Rated).  
<sup>7</sup> Reflector interior finish is standard black with reflector face finish in Matte White (W), Specular Black (B), and Satin Haze (S).  
<sup>8</sup> For wood ceiling mounting, 1/2" min. thickness needed. If using new construction housing, ensure 1/2" min. exposed wood for proper mounting.  
<sup>9</sup> Special order, minimum order. Extended lead time may apply. Consult Factory. Consult factory for emergency battery options.

**NOTE:** For commercial applications with 1/2" Pipe or Flex-Conduit (LITON# PCT031) Fitting Adaptor should be used. Consult Factory. LRXLD2573 AND LHLD25-FRM for (-L14) 1200lm is available with LFB2012 for Fire-Rated Application.