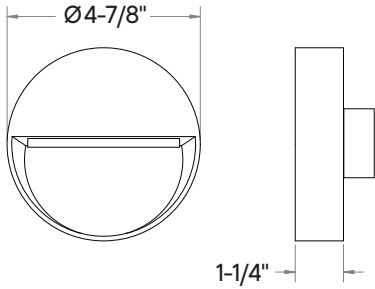
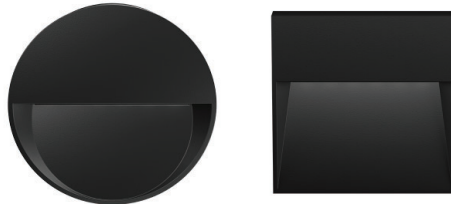
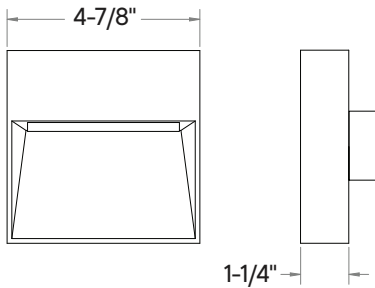


WS477-WSQ477 : 5" ROUND/SQUARE DARKLIGHT SURFACE WALL LIGHT 250LM (5W)

WS477



WSQ477



- Low Glare
- Fully Die-Cast Aluminum
- Marine Grade Finishes
- Amber LED Option (590nm, NOT PC amber)
- ADA Compliant
- Dark Sky Compliant
- IP65 Rated
- IK08 Rated
- Inconspicuous LED layout
- Achieve up to 8' Fixture Spacing at 3' Mounting Height while maintaining a min. of 2 fc at egress

ORDERING : WSQ477B-T27

[Click for Full Specification Details](#)

Fixture	Finish	Optics	Control	Color Temperature	Emergency Options	Options
Fixture						
5" Square Darklight Surface Wall Light 250lm (5W)	WSQ477					
5" Round Darklight Surface Wall Light 250lm (5W)	WS477					
	Black	Standard	Triac/ELV Dimming (120V)	2700K (80CRI)	None	Blank
	White	Forward Throw (Type-IV)	Non-Dimming (120V/277V)	3000K (80CRI)	Remote Emergency Inverter (25W)	Blank
	Bronze			3500K (80CRI)		-EMAC³
	Silver			4000K (80CRI)		-TAM¹
				Limited Wavelength (590nm)		Options
					None	Blank
					Marine Grade Finish	-MGD²

¹ Special Order. Minimum order, extended lead time may apply. Consult factory.

² Special Order Finish. Minimum order quantity (MOQ) applies. Orders less than MOQ are subject to a special paint set-up fee for the quantity ordered. Extended lead times may apply. Consult Factory.

³ Check Wiring Diagram for Remote Emergency Backup.